



BUTLER & STAG

Hillyfields | Loughton
| IG10

This well presented two bedroom split level maisonette is situated on a popular road in Loughton.

- Split Level Maisonette • Two Bedrooms • Spacious Lounge • Walking Distance To Station • Ample Storage/Private Garden • Close To Local Amenities

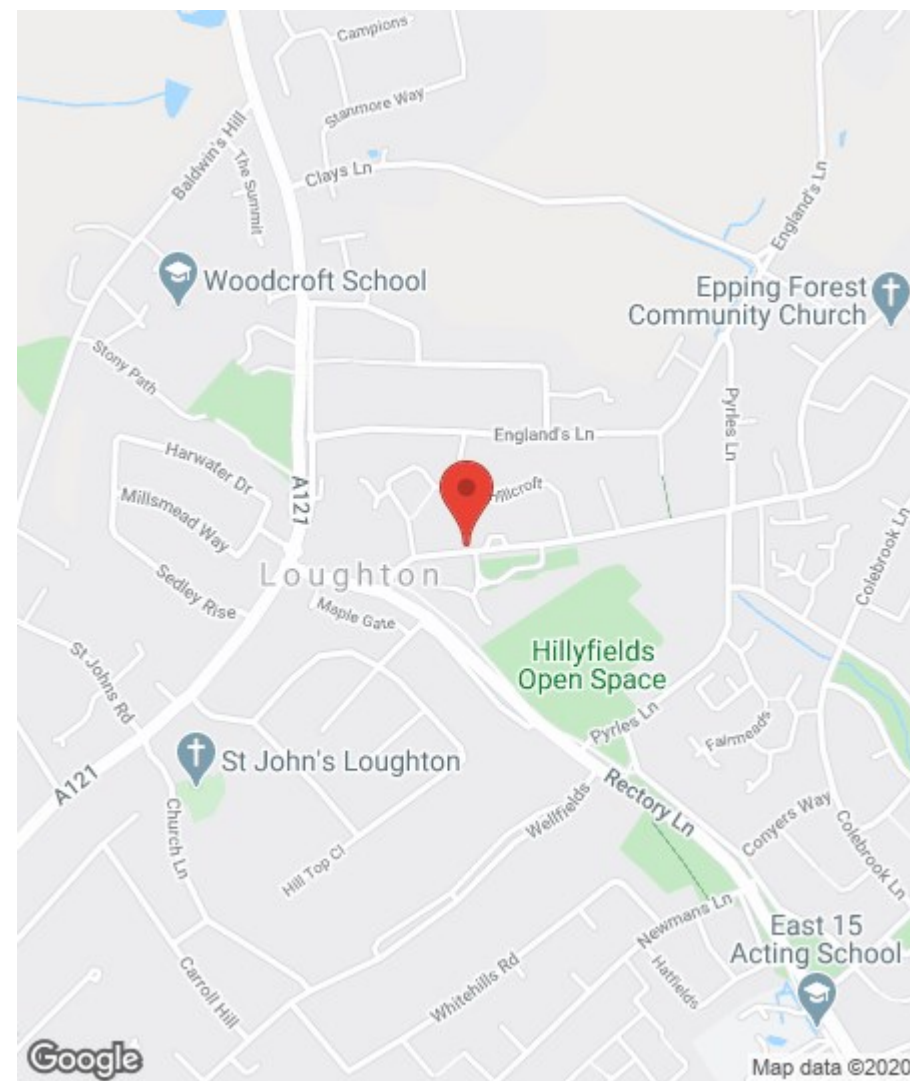
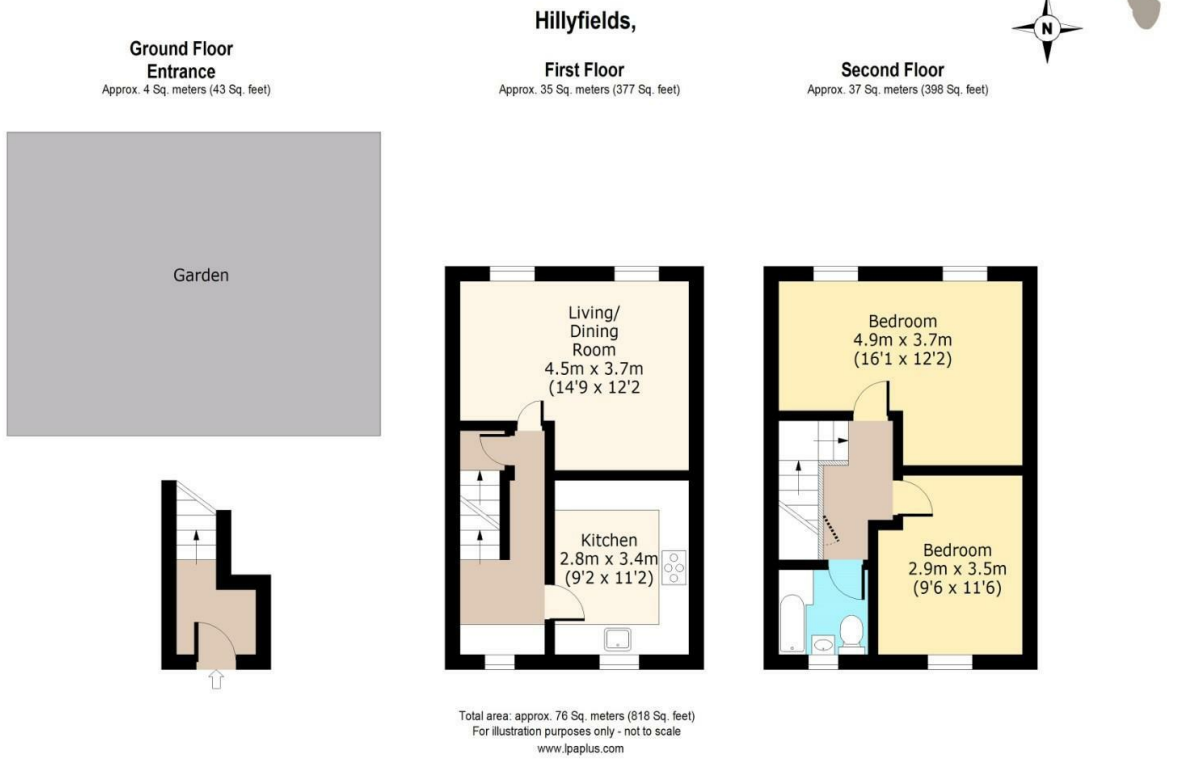
Asking Price £325,000 | Leasehold

Internally the property offers a ample storage with a spacious lounge with dining area, and a separate kitchen, to the first floor you have two double bedrooms, and a family bathroom. Externally there is a generous sized private rear garden.

Hillyfields is ideally situated for local schools, with Hereward Primary School, Davenant Foundation and Debden Park High School all a walk away. Debden Broadway and Central Line Station are equally close by. Loughton is a particularly sought after area due to its schools, transport links and shops, with Epping Forest on the doorstep. The Central Line gives easy access to the City, Canary Wharf and West End, and for road users, the M25, M11 and routes into London are conveniently close by.







BUTLER & STAG

4 Forest Drive, Theydon Bois, Essex, CM16 7EY | 01992 667666 |
theydon@butlerandstag.com | www.butlerandstag.uk

Important Notice - These particulars have been prepared in good faith and they are not intended to constitute part of an offer or contract. We have not performed a structural survey on this property and the services, appliances and specific fittings have not been tested. All photographs, measurements, floor plans and distances referred to are given as a guide and should not be relied upon.

